

Including AI into Trainer Competencies

by Alicia Streppel

Educational Advisor, University of Groningen



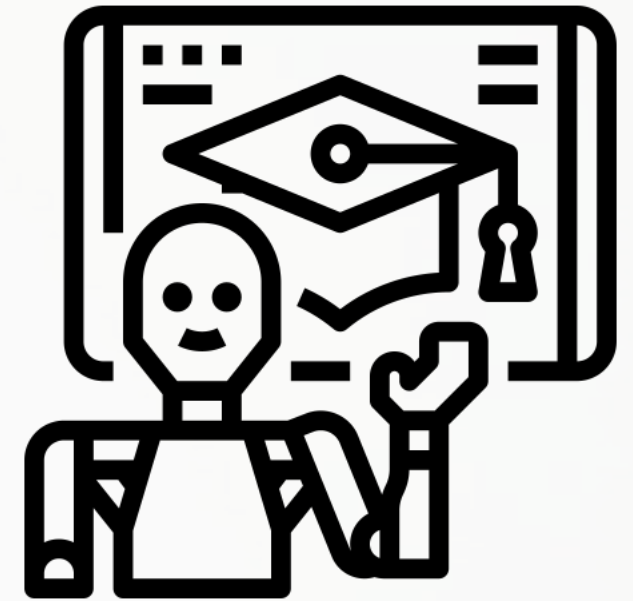
Why AI is Beneficial to Education

1 Enhance Student Learning

- Learning of skills
- (Self-)Assessment
- Improve productivity

2 Data-Driven Decision Making

- Provide insight into student performance
- Advice on how to adjust teaching practices.



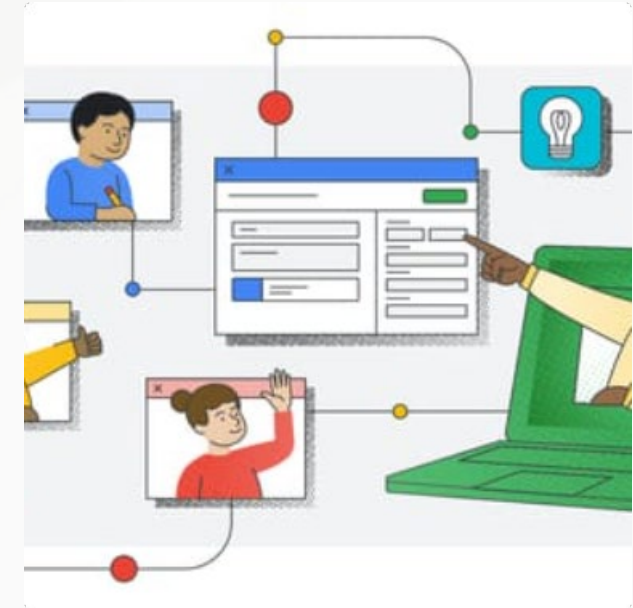
Technologies That Enhance Learning



Chatbots



Virtual
Reality



Adaptive Learning
Platforms

Ethical Implications of AI in Education

- Data Privacy
- Bias in AI

Safeguarding Assessment

- Clear guidelines on what kind of use of AI tools is and isn't permitted
- Detection tools do not work properly → false positives
- Adapting assessment method:
 - Formative/ continuous assessment
 - Adjust test environment
 - Reflection on use of AI

Integrating AI in Curriculum

- Check whether (programme) learning outcomes are still relevant
- Topic Integration
- Interdisciplinary Approaches

Developing AI Literacy for teachers/trainers

- Train Trainers/Teachers
- Collaboration
- Experimentation

More information on AI in education can be found here:

<http://edusupport.rug.nl/ai>